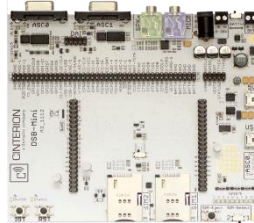


Developing with Cinterion® Modules

DSB-mini
The cost-effective
DSB75 alternative



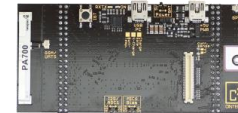
DSB75
Fully-fledged
development board



Adapter Boards
Combines with the
module of your choice



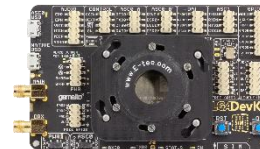
Starter Kit
Developing within
minutes



Evaluation Modules
Cinterion SMT modules
available on B2B format



LGA DevKit Module
evaluation kit suitable for
all industrial and most
industrial plus LGA
modules



LGA DevKit

Module evaluation kit suitable for all footprints

Socket solution for developing with **LGA** modules.

Compatible with all Industrial and most Industrial Plus LGA modules.

Clear & easy concept for usage and signaling

Supports LGA footprint Industrial (SM) and parts of IndustrialPlus (L)

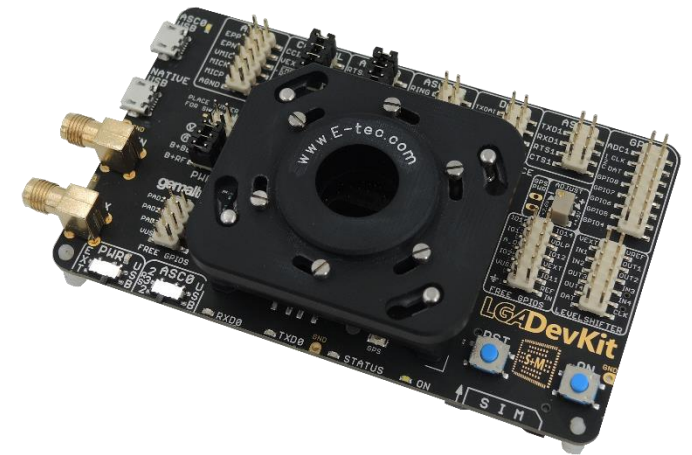
Operates stand alone as well as in DSB environment

Real current measurement from uA to A

Access and/or disconnect all module signals

Fasten the module intergration

Documentation access through GTO website/ QR code on PCB



DSB75

All-round development board

DSB75 is designed to support system integrators in developing and evaluating products based on Cinterion Wireless Modules. The DSB75 is compatible with all DSB-Adapter boards.

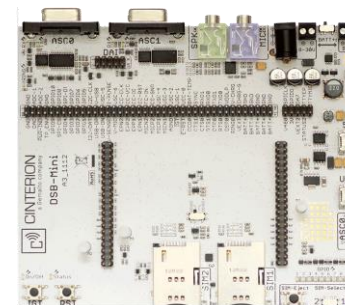


USB	Antenna Interface
3x Serial Ports	10x GPIOs accessible from pin header
I2C and SPI	ADC and DAC
Digital and Analog Audio	23x LED indicator for control, RS232 and GPIO
SD Card Interface	All module signals accessible
SIM Interface (1.8/3.0V)	

DSB-mini

Cost-optimized development board

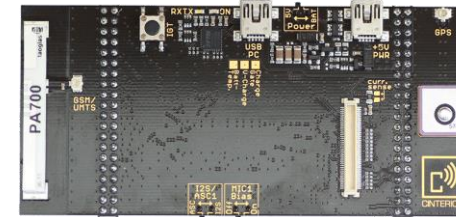
DSB-mini is the alternative to DSB75 including two USB ports, dual SIM support and pads for a component SIM. The DSB-mini is compatible with all DSB-Adapter boards, the Multi-Adapter R1 and all Starter Kits.



2x RS232	DAI interface
USB	Prepared for component SIM
Audio connector for conventional headsets	LED indicator for control, RS232 and GPIO
Power supply through USB, 8-30 V or battery	All module signals accessible
Dual SIM interface	Automatic driver level adjustment

Starter Kit

A perfect way to kick off your design



Simple environment which allows you to start developing within a few minutes. Includes on-board antennas. Compatible with most 80-pin B2B modules and evaluation boards.

Compatible with 80-pin Modules and Evaluation Boards

Fits on DSB-mini

USB connector

On-board LEDs

SIM card holder

Power supply through USB or DSB

Prepared for component SIM

On-board septa-band cellular antenna (SK-B80)

On-board GPS antenna (SK-B80)

Adapters for DSB75 or DSB mini

AH6-DSB75 Adapter

L30960-N2301-A100



EVAL-DSB Adapter Rev.1

L30960-N0100-A100

Successor of AH6-DSB75 Adapter (SOP Q2 2019)

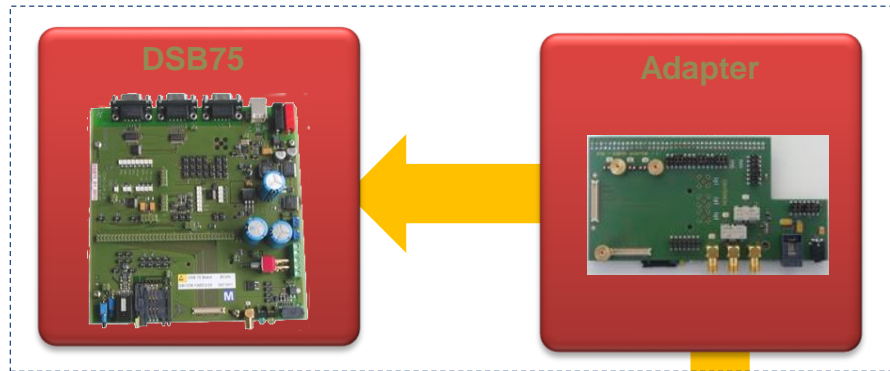
ALAS6-DSB75 Adapter

L30960-N4103-A100



Connectivity options: DSB75 - DSB mini with Adapter – Starter Kit

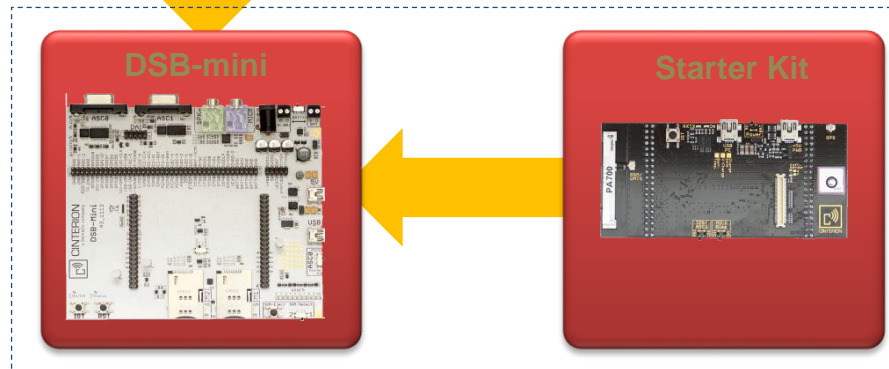
Broadest function scope



- Combine **DSB75** and **Adapter** for broadest testing scope including industry standard audio connectors, serial ports, USB and full-access to module pins

- Use **Starter Kit** as a stand alone solution to evaluate Cinterion® Wireless Modules
- Combine with **DSB-mini** to expand the supported interfaces

Cost-efficient development

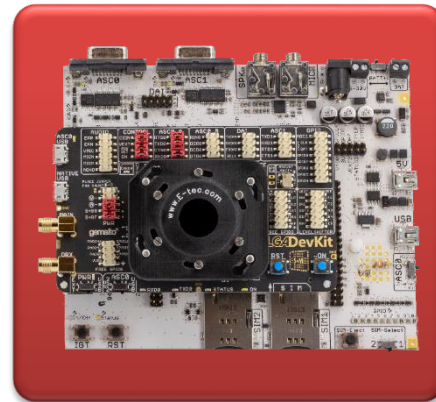


Connectivity options: LGA DevKit with DSB75 - DSB mini

- Use **LGA DevKit** as a stand alone solution to evaluate Cinterion® **LGA** Modules



- Combine with **DSB-mini** or **DSB75** to expand the supported interfaces with SUB-D9, 2. SIM, Analog audio interface



Adapter LTE Modem Card

L30960-N3202-A300



Package content

- 1 USB Cable (USB Connector A to USB Mini Connector B)
 - 3 Hirose Antenna cables
 - 2 GMS/UMTS/LTE Antennas
- GNSS Antenna and Power supply are not part of the LTE Modem Card Adapter Board delivery.

- For all LTE Modem Cards mPLSx and mPLASx
- Adapter LTE Modem Card can operate stand-alone
=> suitable for field tests
- 2x SIM Interface
- 3x Antenna connectors
- 1x USB Interface
- Power Supply 3.3V
- PCI Express® Mini Card system connector for LTE Modem Card
- Reference environment

DSB75